

Partnering with Families Communicate, Coordinate, and Collaborate

Pennsylvania Office of Child Development and Early Learning



**2023 OSEP LEADERSHIP AND PROJECT DIRECTORS'
CONFERENCE**





2023 OSEP Leadership and Project Directors' Conference



DISCLAIMER:

The contents of this presentation were developed by the presenters for the 2023 OSEP Conference. However, these contents do not necessarily represent the policy of the Department of Education, and you should not assume endorsement by the Federal Government.

(Authority: 20 U.S.C. 1221e-3 and 3474)

Introductions



Toni Miguel

Educational Consultant
Early Intervention Technical
Assistance



Sadia Batool

Early Childhood Family Lead
Office of Child Development and Early Learning



Policy Statement released by the U.S. Departments of Health and Human Services on Family Engagement from the early years to the early grades (2016)

“Family Engagement refers to the systematic inclusion of families in activities and programs that promote children’s development, learning, and wellness, including in the planning, development, and evaluation of such activities, programs, and systems.”



History of Parent Movement in Pennsylvania



Family Leadership in Pennsylvania

The Pennsylvania Family Engagement Birth through College, Career, Community Ready Framework

A tool to guide the implementation of effective practices, use of shared language, and a family engagement continuum for families across their child's educational lifespan.



Pennsylvania's Family Engagement Birth through College, Career, Community Ready Framework:

A Companion Guide for Families



Family Engagement Definition

Effective family engagement in the birth through college, career, community ready educational system is intentional, meaningful, and impactful.

Learning Communities value and support families in their role as a child's first teacher. It is essential to leverage the expertise, knowledge, and leadership of families and community partners to shape the educational environment at the program, classroom, school, state, and national level.

These partnerships are strengths based, inclusive, culturally and linguistically responsive, and rely on two-way communications. They focus on the shared goal of positive learning and developmental outcomes for children.



Competence and Confidence Partners in Policy Making Early Intervention (C2P2EI)



C2P2EI training has been the most impactful experience I have had since becoming a parent. It has completely transformed my mindset, shifting me from feeling like a powerless victim to becoming an agent of change. This training equips me with the necessary tools to empower and advocate for my children. Through this training, I have acquired valuable advocacy and leadership skills, enabling me to speak up for other families and assist policymakers in introducing groundbreaking bills that can revolutionize the lives of Pennsylvania families with special needs.

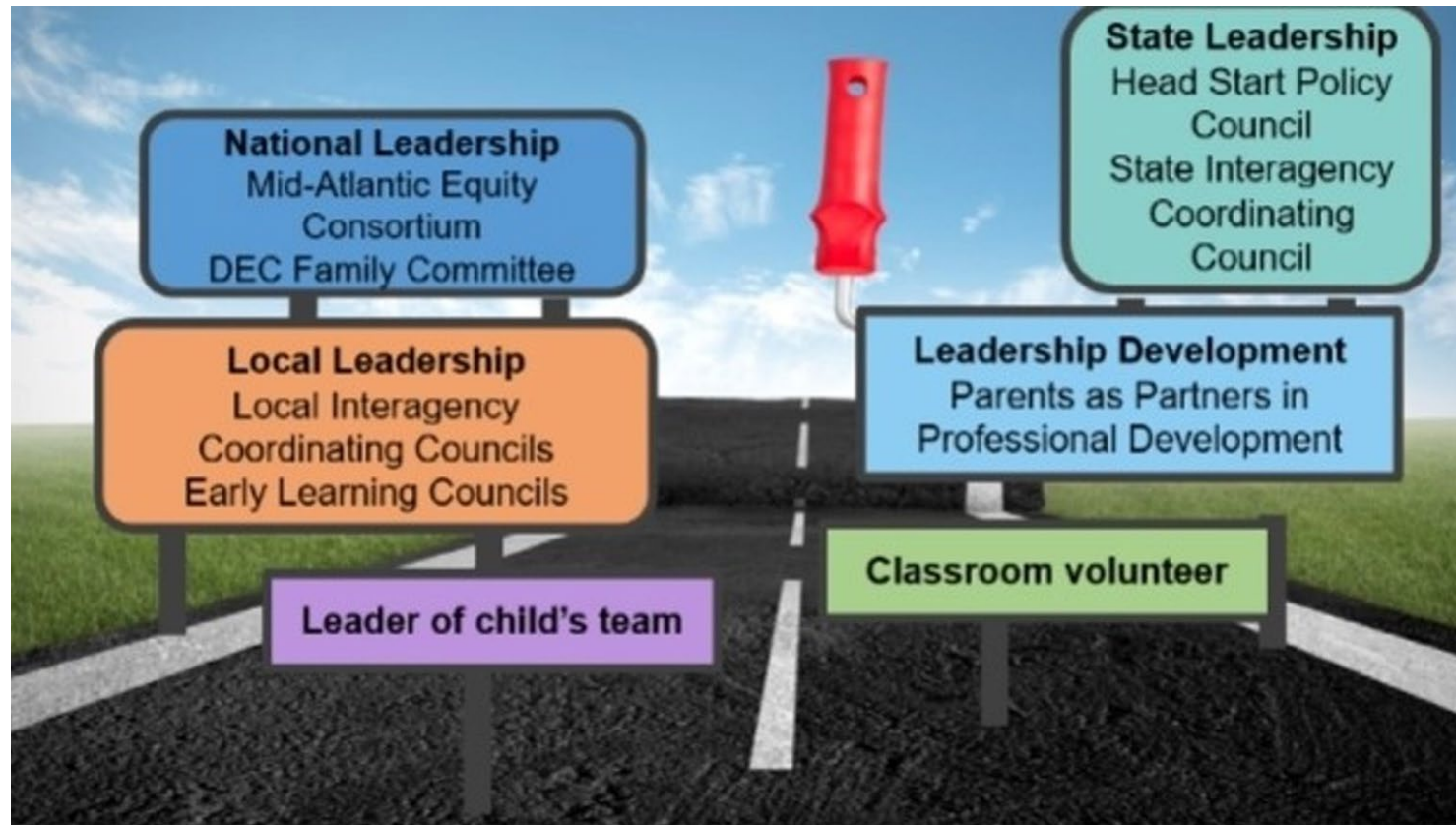
C2P2EI Graduate W.S



Parents as Partners in Professional Development



Family Leadership Pathways



Professional and Family Partnership – Ripple Effect in Action

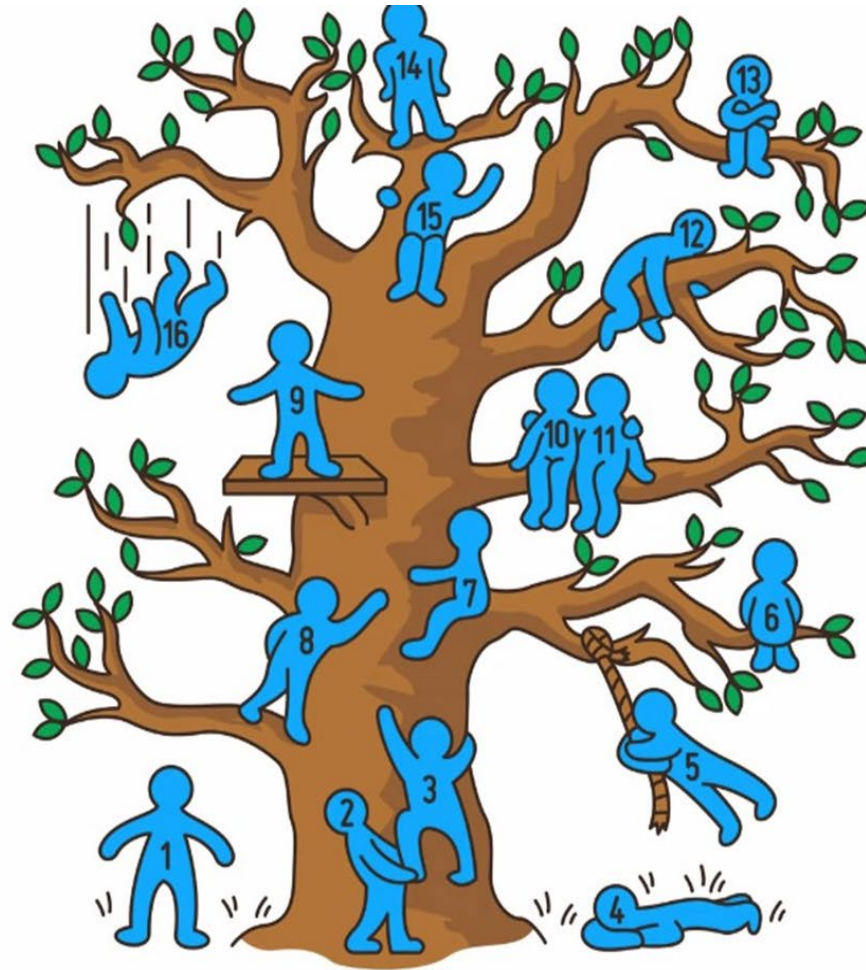


Ripple Effect in Action: Leadership Lessons Learned



Pair and Share

Community
Builder



Family Leadership - Panel Discussion



Panelist Introductions - Carmen

Carmen M. Sánchez

Education Program Specialist

Office of Special Education Programs

US Department of Education

carmen.sanchez@ed.gov



Panelist Introductions - Lisa

Lisa Parker

Director

Bureau of Early Intervention
Services and Family Supports

Office of Child Development and
Early Learning

liparker@pa.gov



Panelist Introductions - Sarah

Sarah Holland

Director

Parent to Parent of Pennsylvania
and Family Engagement Initiatives

sholland@parenttoparent.org



Panelist Introductions - Kris

Kris Bowman

Executive Director

Ramsey Educational Development
Institute (REDI)

Pennsylvania SICC Member

kbowman@themooregroup.com



Welcome Panelists

- **Carmen M. Sánchez** - Education Program Specialist, Office of Special Education Programs at the US Department of Education
- **Lisa Parker** – Director, Bureau of Early Intervention Services and Family Supports
- **Sarah Holland** - Director, Parent to Parent of Pennsylvania and Family Engagement Initiatives
- **Kris Bowman** - Executive Director, Ramsey Educational Development Institute (REDI) and Pennsylvania SICC Member



Questions



Family Professional Partnership

“...No matter how skilled professionals are, nor how loving families are, each cannot achieve alone, what the parties, working hand-in-hand, can accomplish together.”



(Adapted from Peterson and Cooper as cited in 2007)



THANK YOU!

Do you have any **questions or comments?**

Please contact us at

Sadia Batool c-sabatool@pa.gov

Toni Miguel tmiguel@pattankop.net



Resource Spotlight

- Individuals with Disabilities Education Act (IDEA) website
 - Brings together IDEA information and resources from the Department and its grantees.
 - <https://sites.ed.gov/idea/>
- IDEAS That Work
 - For information from research to practice initiatives funded by OSEP that address the provisions of IDEA and ESSA. This website includes resources, links, and other important information relevant to OSEP's research to practice efforts.
 - <https://osepideasthatwork.org/>





2023 OSEP Leadership and Project Directors' Conference



DISCLAIMER:

The contents of this presentation were developed by the presenters for the 2023 OSEP Conference. However, these contents do not necessarily represent the policy of the Department of Education, and you should not assume endorsement by the Federal Government.

(Authority: 20 U.S.C. 1221e-3 and 3474)